



Filter Material Series



Excellent Performance

Shengchuan filters allow dust collectors to operate under better performance, and have a wide range of applications in dust, fumes and oil mist. Different working conditions, according to the material characteristics and material manufacturing process, select the corresponding filter material, while taking into account the best filtration accuracy, the minimum operating differential pressure resistance, the traditional process, the air flow and filtration accuracy, filtration pressure drop is inversely proportional to the high permeability at the expense of the efficiency of the filtration efficiency, often means that the use of the life of a short, the Holy Spirit company is committed to improving the relationship between the filter cartridge to improve filtration efficiency and precision, while ensuring that the service life of the filter cartridge is not affected. The company is committed to improving this relationship, not only to improve the filtration efficiency and precision of the cartridge, but also to ensure that the service life of the cartridge will not be affected, and at the same time, the application of new technology, so that the service life of the cartridge and the filtration precision to reach a very high stage.

- ◆ Higher performance
- ◆ Higher dust removal efficiency
- ◆ Longer service life
- ◆ Higher value



Filter Material Series



Filter Cartridge Selection

Top Mounting Head

Various mounting structures, hard PU, soft PU, metal cover, etc., one-piece molding design, user-friendly mounting, quick replacement and maintenance of the filter.

Top Seal

Can be used in a variety of ways, such as cloth ring, silicone rubber, stainless steel shrapnel, etc., to ensure that the sealing effect of the filter cartridge.

Filter Material

A variety of filter materials, such as: PTFE coating, anti-static, oil and waterproof, flame retardant, etc., according to the actual working conditions to achieve the optimal effect, to meet the needs of ultra-low emissions.

Protective Tape

According to the requirements of filter material and working conditions, we can use different technologies, such as hot melt adhesive, ultrasonic welding and so on.

Bottom End Cap

Hard PU, soft PU, galvanized metal and stainless steel are available.



Model

Cartridge Model	Top Cap OD (mm)	Bottom Cap OD	Installation Hole(mm)	Height (mm)	Filter Area (m ²)
RH/Z3266	φ324	φ324	φ14/25	660	18-21
RH/Z3275	φ324	φ324	φ14/25	750	20-24
RH/Z3290	φ324	φ324	φ14/25	900	28-31
RH/Z32100	φ324	φ324	φ14/25	1000	28-31
RH/Z3266F	406X364X φ324	φ324	/	660	18-21
RH/P3275F	406X364X φ324	φ324	/	750	20-24
RH/Z32100F	406x364x φ324	φ324	/	1000	28-31
RH/Z403266	φ406	φ324	/	660	18-23
RH/Z443266	φ445	φ324	/	660	18-23

NOTE: Above data is the standard filter cartridge specification also the products can be customized in accordance clients' requirement



CYLINDRICAL FLTER CARTRDGE

- Performance Statement**
- ◆ Wide pleat distance design.
 - ◆ Inlet and outlet surfaces are protected by metal mesh with >72% openings, which does not affect the flow rate.
 - ◆ Filter material is made of fine fiber and fiber containing resin.
 - ◆ Specific processing technology prevents excessive misalignment of the filter media.
 - ◆ Special filter media fixing so that the filter media does not rub against the metal guard.
 - ◆ High efficiency filtration.
 - ◆ Top opening, bottom opening/bottom capping with reduced mounting holes.
 - ◆ Galvanized, rust-resistant metal construction parts.
 - ◆ Rubber seal.



THREE-LUG/FOUR-LUG FILTER CARTRIDGE

- Performance Statement**
- ◆ Rubber seal.
 - ◆ Filter material has various choices.
 - ◆ High precision filtration process.
 - ◆ Top opening, bottom sealing.
 - ◆ Three lugs/four lugs design, flower plate can be installed at top and bottom.
 - ◆ Stainless steel or galvanized top and bottom end caps.
 - ◆ External adhesive fixing, so that the filter material does not rub against the metal guard net.
 - ◆ The air outlet side is protected by galvanized rust-proof metal/stainless steel metal mesh support with an opening rate of >72%, which does not affect the pulse blowback.



SQQUARFE CAP OF CARTRDGE FILTER

- Performance Statement**
- ◆ Rubber seal. Wide pleat pitch design.
 - ◆ Top opening, bottom sealing.
 - ◆ Nano high-precision filtration process.
 - ◆ Chuck type design, easy to install.
 - ◆ Filter cartridge is installed vertically, rotating from the bottom of the flower plate to install and remove.
 - ◆ Internal spiral adhesive fixing, so that the filter material does not rub against the metal guard net.
 - ◆ The filter material is made of wood pulp fiber polyester fiber, better waterproof performance.
 - ◆ The inlet and outlet surfaces are protected by galvanized rust-proof metal/stainless steel metal mesh support with a pore opening rate of >72%, which does not affect the pulse blowback.



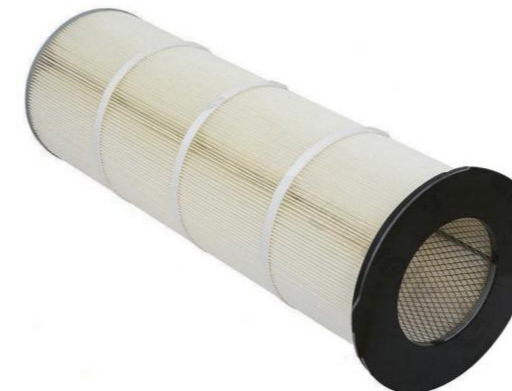
THREAD TYPE FILTER CARTRIDGE

- Performance Statement**
- ◆ Rubber seal.
 - ◆ Filter material has various choices.
 - ◆ High precision filtration process.
 - ◆ Top opening, bottom sealing.
 - ◆ Threaded design, rotary installation.
 - ◆ Stainless steel or galvanized top and bottom end caps.
 - ◆ External adhesive fixing, so that the filter material does not rub against the metal guard net.
 - ◆ The air outlet side is protected by galvanized rustproof metal/stainless steel metal mesh support with opening ratio >72%, which does not affect the pulse blowback.



SQUARE COVER OF CARTRDGE FILTER

- Performance Statement**
- ◆ Rubber seal.
 - ◆ Wide pleat pitch design.
 - ◆ Top opening, bottom seal. ◆ Polyester high-precision PTFE lamination.
 - ◆ Square cover design, flower plate can be installed at the top and bottom.
 - ◆ Filter material is made of polyester fiber for better waterproof performance.
 - ◆ Internal spiral adhesive fixing, so that the filter material does not rub against the metal guard net.
 - ◆ The inlet and outlet surfaces are protected by galvanized rust-proof metal/stainless steel metal mesh support with a pore opening rate of >72%, which does not affect the pulse blowback.



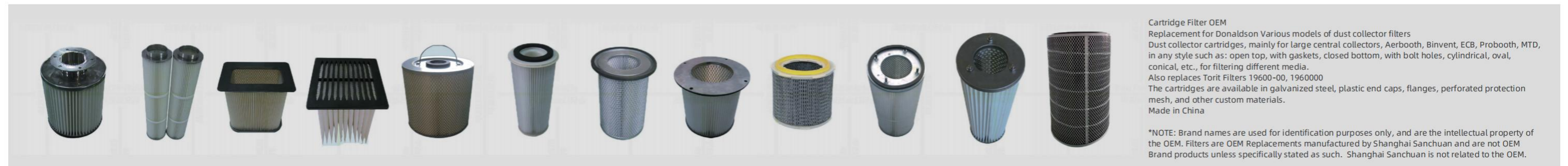
FLANGE TYPE FILTER CARTRIDGE

- Performance Statement**
- ◆ Rubber seal.
 - ◆ Multiple choices of materials.
 - High-precision filtration process.
 - ◆ Top opening, bottom sealing.
 - ◆ Circular flange design for easy installation.
 - ◆ Stainless steel or galvanized top and bottom end caps.
 - ◆ Internal and external adhesive fixing, so that the filter material does not rub with the metal mesh.
 - ◆ The air outlet surface is supported and protected by galvanized rustproof metal/stainless steel metal mesh with an open pore rate of >72%, which does not affect the pulse blowback.



Filter Material Parameter Table

Description			Specification			Chemical Properties				
Model	Material	Reprocessing	Grammage (gxam/ m ²)	Thickness (mm)	Max Temperature (°C)	Permeability	Oil and water resistant	Water resistant	Acid Resistant	Alkali-resistant
SC-MT8FR	Polyester 10% Fiber 90	Charcoal Impregnated Flame Retardant Nano	130	0.36-0.4	80	★★	—	—	★	★
SC-M100	Fiber 100%		118	0.78	80	★★	—	—	★	★
SC-M101	Polyester 20% fiber 80		130	0.64	80	★★	★	★	★	★
SC-M102	Polyester 15% fiber 85		124	0.7	80	★★	★	★	★	★
SC-M103FR	Polyester 15% Fiber 85	Nano Flame Retardant	137	0.78	80	★★★★	★★	★	★	★
SC-M104	Polyester 15% fiber 85	Nano	132	0.84	80	★★★★	★★	★	★	★
SC-J105	Polyester 100% fiber		240	0.75	120	★★	★★	★	★★	★
SC-J106	Polyester 100% fiber		260	0.61	120	★★	★★	★	★★	★
SC-J107FR	Polyester 100% fiber	Flame retardant	260	0.61	120	★★	★★	★★	★★	★
SC-J108	Polyester 100% fiber	Antistatic	260	0.6	120	★★	★★	—	★★	★
SC-J109	Polyester 100% fiber	Oil and water resistant	260	0.61	20	★★★★	★★★★	★★★★	★★	★★
SC-J110	Polyester 100% fiber	PTFE Laminating Film	240	0.6	120	★	—	★★★★	★★	★★
SC-J111	Polyester 100% fiber	PTFE Laminating Film	260	0.68	120	★	—	★★★★	★★	★★
SC-J112	Polyester 100% fiber	PTFE Laminating Film	270	0.82	120	★	—	★★★★	★★	★★
SC-J113FR	Polyester 100% fiber	Flame Retardant PTFE Laminating Film	260	0.62	120	★	—	★★★★	★★	★★
SC-J114	Polyester 100% fiber	Anti-static PTFE Film	260	0.83	135	★	—	★★★★	★★	★★
SC-J115	Polyester 100% fiber	New PTFE Film	135	0.58	110	★	—	★★★★	★★	★★
SC-J116	Polyester 100% fiber	Carbon Black Antistatic	263	0.61	120	★	—	—	—	★★
SC-J117FR	Polyester 100% fiber	Carbon Black Antistatic Flame Retardant	264	0.62	120	★	—	★★★★	★★	★★
SC-J118FR	Polyester 100% fiber	Carbon Black Anti-Static Flame Retardant PTFE	265	0.62	120	★	—	★★★★	★★	★★
SC-J119FR	Polyester 100% fiber	Nomex	300	1.1	230	★	—	—	★	★
SC-J120FR	Polyester 100% fiber	Nomex Laminating Film	300	1.2	230	★	—	★★★★	★	★
SC-J121FR	Polyester 100% fiber		300	1.2	170	★	—	★★★★	★★★★	★★



Cartridge Filter OEM
 Replacement for Donaldson Various models of dust collector filters
 Dust collector cartridges, mainly for large central collectors, Aerbooth, Binvent, ECB, Probooth, MTD, in any style such as: open top, with gaskets, closed bottom, with bolt holes, cylindrical, oval, conical, etc., for filtering different media.
 Also replaces Torit Filters 19600-00, 1960000
 The cartridges are available in galvanized steel, plastic end caps, flanges, perforated protection mesh, and other custom materials.
 Made in China

*NOTE: Brand names are used for identification purposes only, and are the intellectual property of the OEM. Filters are OEM Replacements manufactured by Shanghai Sanchuan and are not OEM Brand products unless specifically stated as such. Shanghai Sanchuan is not related to the OEM.